

SHERATON

2 layouts available • Sleeps 6

The Sheraton is a classic home that is sure to turn heads. With a soothing new colour palette for 2020, it's the perfect retreat from busy modern life.

Need that extra space? You can super-size to our Sheraton Elite model which is an impressive 42 x 14.



View our 360° walk-through online tour



For more details visit willerby.com



Floor plans shown on page 89



Deluxe pack available



Deluxe pack

- ✓ Integrated Bluetooth MP3 sound system
- ✓ Integrated washer/dryer
- ✓ Integrated slimline dishwasher
- ✓ Simply Better Sleep mattress upgrade pack (see p90)
- ✓ Bedding pack – Slate (see p90)



KEY FEATURES

MASTER SUITE

The luxurious Sheraton master bedroom suite boasts a walk-in wardrobe, ensuite with shower (*bath in Elite model*) and a spacious dressing table with mirror.

1. COUNTRY HOME

You'll love the heritage feel of the Sheraton with its rustic Welsh dresser, feature fireplace with wood effect fire and matching twin sofas.

2. VIEWING PLEASURE

The Sheraton's triple front aspect windows flood its living space with natural light – perfect for those who enjoy stunning front facing views on park.

3. WARM & TOASTY

Stay cosy and comfortable all year round with the rich colours and classic prints of the Sheraton's curtains, cushions and soft furnishings.

4. BIGGER & BETTER

The 42 x 14 Sheraton Elite features all the benefits of the standard model plus a bath, a Velux® skylight in the kitchen, bigger sofas and 3ft wide single beds - plus a larger walk-in wardrobe.



With our Willerby feature highlight you will never miss the special little touches we add to our homes.

STANDARD FEATURES

EXTERIOR/STRUCTURE

- Aluminium cladding - standard colour Light Grey
- Energy efficient white PVCu double glazed windows and doors
- Fully galvanised chassis

INTERIOR FEATURES

- Central heating system featuring high-efficiency condensing combi boiler (*see p59*)
- Integritas Wall System™ (*see p58*)
- Brushed chrome sockets and USB outlets

LOUNGE

- Two freestanding two-seater sofas with fold-out bed (*sofas differ between sizes, please enquire when ordering*)
- Scatter cushions
- Footstool (*Elite model only*)
- Wood burner effect electric fire (*see p58*)
- Coffee table
- TV unit and TV point
- Mirror

DINING AREA

- Freestanding dining table and upholstered dining chairs
- Welsh dresser

KITCHEN

- Velux® window (*Elite model only*)
- Integrated microwave (*see p58*)
- Integrated 70/30 fridge-freezer
- Gas oven/grill with 4 burner hob and glass splashback (*see p58*)
- Extractor fan

MAIN BEDROOM

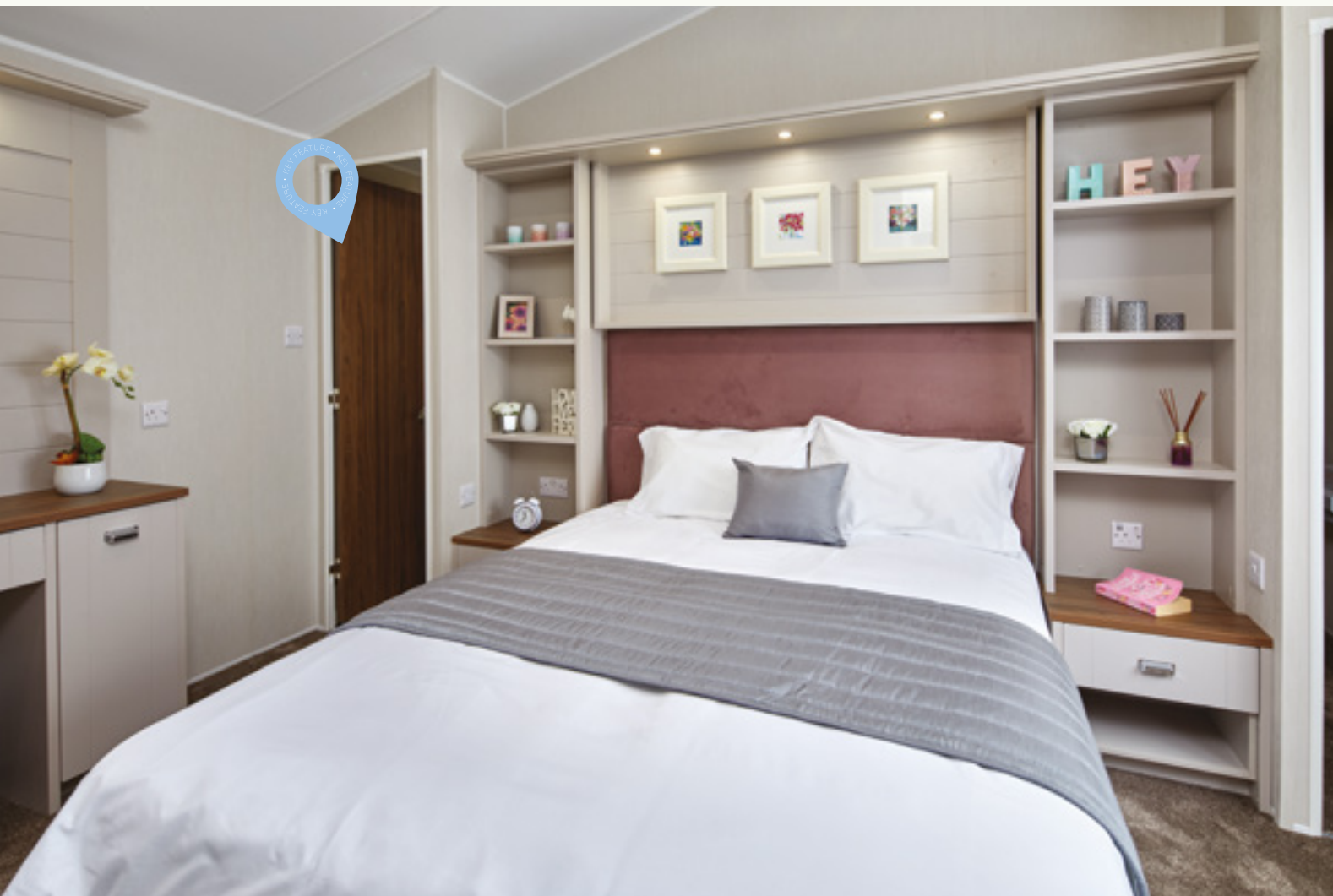
- King-size bed with lift-up storage system and upholstered headboard
- Bedside cabinets
- Walk-in wardrobe
- Dressing table with mirror and stool
- Tallboy drawer unit
- TV point
- Ensuite shower room (*13ft model only*)
- Ensuite bathroom (*Elite model only*)

TWIN BEDROOM(S)

- Single beds with upholstered headboards (*3ft wide single beds in Elite model only*)
- Bedside cabinet
- Wardrobe
- TV point

FAMILY SHOWER ROOM

- Shower enclosure with thermostatically controlled shower
- Dual flush WC
- Wash basin
- Mirrored cabinet



OPTIONAL EXTRAS

- ☐ Deluxe Pack (*see p85*)
 ☐ Sheraton Lodge Specification - including CanExel® cladding and window frames in a choice of colours, Residential Specification BS 3632 (2015), outlook French doors to lounge and *Sheraton Lodge* name badge
 ☐ Exterior cladding – rigid vinyl and CanExel® options (*see p120*)
- ☐ Environmental Green exterior with graphite windows (*see p120*)
 ☐ Graphite PVCu windows and doors
 ☐ Outlook French doors to lounge
 ☐ Wireless thermostat
 ☐ Storage footstool to lounge
 ☐ High level TV point to lounge
- ☐ Double bed to replace twin beds
 ☐ Shower to replace bath in ensuite (*Elite model only*)
 ☐ Residential Specification BS 3632 (2015) *Includes outlook French doors to lounge (*see p127*)
 ☐ European Specification (*see p74*)
 ☐ Simply Pawsome dog friendly pack (*see p66*)
- ☐ Trace heating (*see p4*)
 ☐ Eco pack (*see p4*)

FLOOR PLANS



Sheraton • 40 x 13 • 2 bedroom



Sheraton Elite • 42 x 14 • 2 bedroom

Key

- | | | |
|---------------------------|--------------------|--------------|
| Boiler | Microwave | Fold-out bed |
| Fridge-freezer | MP3 position | Fire |
| Wardrobe | Washer/dryer space | TV space |
| Slimline dishwasher space | Cooker | |

For more images and videos of the Sheraton please visit us online at willerby.com/sheraton

SHOWER OPTION
Shower to replace bath in ensuite in the Sheraton Elite model only.

Photography shows the 42 x 14 Sheraton Elite model with optional Residential Specification BS 3632 (2015) and deluxe pack. Product photography is intended for illustrative purposes only. Your holiday home may vary from product photography based on your chosen specification, options selected and availability of materials. Some of the items photographed (such as TV, DVD player, kettle, and ornaments etc.) are accessories used for illustrative purposes only and are not included. Specifications and options are accurate as of 16th August 2019. All specifications and options are subject to change and are superseded by any subsequent publication. Additional product images can be viewed at willerby.com