

ARDENNES PLATINUM



The Ardennes Platinum has been built with exclusive features to offer a high quality product that is exceptional value.



Also available in 'Sandy Beige'



ARDENNES PLATINUM

Features and Benefits

Exterior

- Fusion galvanised chassis with finish warranted for ten years
- Bonded sandwich exterior wall construction for greater strength
- Coated steel pantile roof
- Distinctive pre-coated 'folded' steel bargeboards with LED lighting to front aspect
- Woodgrain textured aluminium cladding, available in two colours:
 - ◆ Sandy Beige
 - ◆ Environmental Green
- Graphite uPVC windows with push-button security locks
- Black PVC gutters and down pipes
- Low energy exterior side light

Insulation

- Excellent thermal performance:
- 'Thermaglas' uPVC double glazing
 - ◆ 50mm insulation in floor
 - ◆ 90mm insulation in roof
 - ◆ 30mm insulation in walls
- Lagged underfloor pipes

Interior

- Condensing gas combi-boiler central heating and hot water system
- 'Oatmeal & Grape' soft furnishing scheme
- Radiator thermostats
- Laminate effect vinyl flooring in kitchen/dining/bathroom(s)
- Low energy LED lighting throughout
- 'Tisano Oak' woodgrain
- USB sockets
- Good provision of double electric sockets throughout
- Hallway door (except 28' x 12' model)

Lounge

- Outlook doors
- Fixed L-shape sofa with fold out occasional bed
- Coffee table
- Lined curtains with tiebacks
- Window next to fireplace (35' & 38' x 12' models only)
- Luxury lounge carpet with underlay
- Electric fire
- Additional shelves by unit for DVD player
- TV point and 240V socket
- 32" Smart TV
- Bluetooth Sound System

Kitchen & Dining

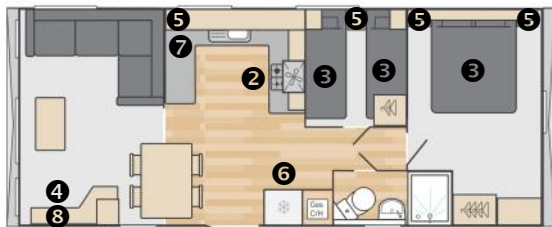
- Thetford 'Cocina' glass fronted oven, grill and electronic ignition with improved door function, higher temperatures, burner rating and heat up times
- Stainless steel cooker hood with extractor fan vented to outside
- 4-burner gas hob with electronic ignition and glass splashback
- Integrated microwave oven
- Full height integrated fridge freezer
- Stainless steel sink/drainer
- 30mm 'White Ottawa' laminate worktops with matching upstands
- Freestanding dining table and chairs (two additional folding chairs in 3 bed models)

Bathrooms

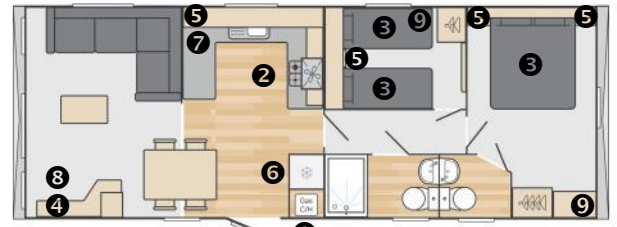
- Shower cubicle with thermostatic shower in main bathroom
- LED vanity spotlights
- Dual flush WC
- Radiator in en-suite
- Extractor fan in main bathroom

Bedrooms

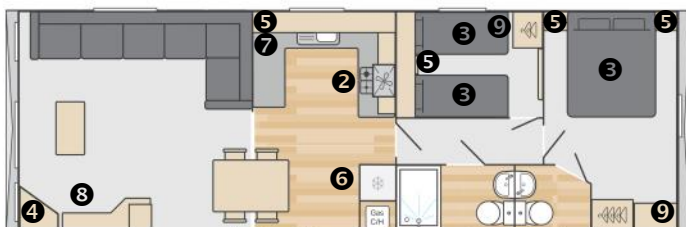
- Contemporary handleless furniture design and feature panels
- One bed stores under the other for extra space in one twin bedroom
- Duvalay™ mattress to all beds with Crib 5 rated fabric
- Fabric headboard(s)
- Bedside shelf units and overbed storage
- Vanity area with mirror and socket in main bedroom
- TV sockets & Co-Ax to all bedrooms plus booster (except 28' x 12' 2B)
- Lift-up double bed with storage



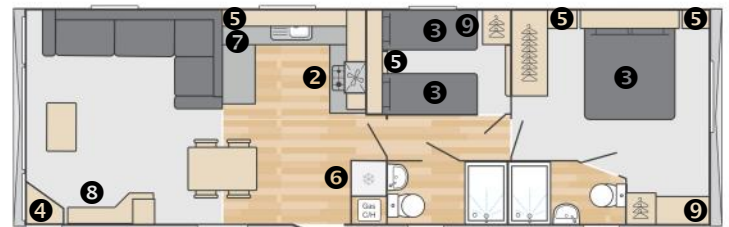
28x12 - 2 bed



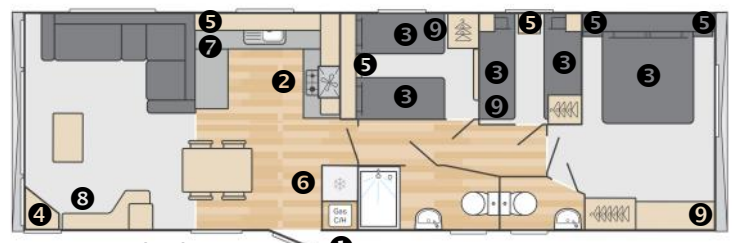
32x12 - 2 bed



35x12 - 2 bed



38x12 ES - 2 bed



38x12 - 3 bed