



# Kingfisher & Kingfisher RT *Luxury Lodges*



—— ‘building your dreams’ ——

**01842 810 673 | [www.omar.co.uk](http://www.omar.co.uk)**

KINGFISHER IS A  
STUNNING LODGE  
WITH FULL GLASS  
FRONT FASCIA  
LETTING THE  
OUTSIDE IN



## Kingfisher **Luxury Lodge**

The Kingfisher has been the most popular lodge in the UK for many years and it's easy to see why. The full glass front fascia with feature lighting creates a light and airy feel - perfect for park settings, allowing the outside in. With vaulted feature ceilings, the bright and spacious feel continues throughout. Available in a range of sizes, the clever layout of the open plan living area incorporates a fully-fitted designer kitchen, dining area and lounge, providing plenty of space for families to enjoy the luxury of this beautiful lodge. The Kingfisher is also available with an impressive Roof Terrace - a lodge with a view! With a feature outside staircase, the spacious upper terrace can easily fit two sun loungers, as well as a table and chairs - simply sit back and enjoy the view!



### **Go green with an ECO pack**

Any of our lodges can be enhanced with an ECO pack including intelligent heating controls, LED lighting, LOW E windows and doors and water-saving dishwasher. You can also add ECO extras such as rainwater harvesting, air-source heat pumps, solar water heating and solar-energy panels. For more details, call us on 01842 810 673 or email [eco@omar.co.uk](mailto:eco@omar.co.uk).

**01842 810 673 | [www.omar.co.uk](http://www.omar.co.uk)**



Some photos may include optional extras. Specifications and layouts may differ from those shown here. For full details, please contact our sales team.

### Construction

- Built to BS 3632 and protected by a 10-year Gold Shield structural guarantee
- High pitched tiled roof guaranteed for 40 years with large feature dormer
- Light Oak effect, PVCu double glazing (10-year frame warranty + 5-year glazing warranty)
- Feature interior and exterior lighting
- French doors to the dining area and lounge
- Vaulted ceilings throughout
- Gas central heating

### Kitchen

- High gloss designer kitchen with Mink doors and drawers and a Green Grey carcass
- Integrated fridge, freezer, dishwasher and washer / dryer
- Stainless steel electric double oven
- Five-burner gas hob with glass extractor hood
- Lined Roman blind
- Vinyl flooring
- Utility room on selected floor plans

### Living space

- Feature electric fire
- Lounge suite in natural coloured fabric with contrasting scatter cushions
- Walnut effect furniture including coffee table, mirror, dining table and chairs
- Feature light above dining table
- Fully lined curtains
- Hessian backed carpet with underlay

### Bedrooms and bathrooms

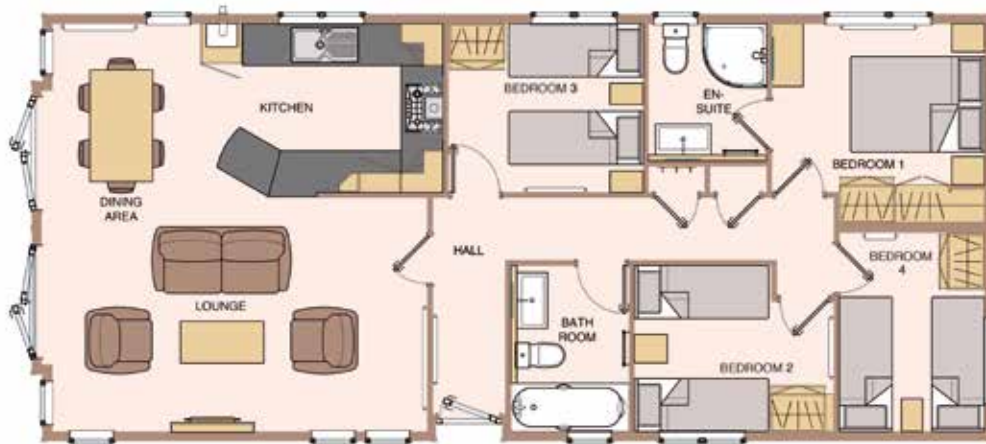
- Double bedrooms with co-ordinating headboards and bed sets
- Fitted furniture in bedrooms
- Fully lined curtains and Roman blinds
- Wall hung basin and vanity unit to bathroom and en-suite
- Quadrant shower cubicle with corner body jets
- Shower room with sauna on selected floor plans

# Kingfisher & Kingfisher RT Luxury Lodges

The Kingfisher is available in a range of standard floor plans, examples of which are shown below. We can modify the floor plans to suit your individual requirements. Please contact our sales team for more details.



**40' x 20' (12.192m x 6.012m) 2 bedrooms, utility, shower room and en-suite bathroom**



**RT 45' x 20' (13.716m x 6.012m) 4 bedrooms, 1 bathroom and en-suite**

The new Kingfisher Roof Terrace (RT) has a generous upper decking area of 14 sqm (circa 150sqft), surrounded by a beautiful balustrade with access via a spiral staircase. Sauna option also available.

## Choosing your lodge

Buying a lodge is a big decision, so at Omar we aim to make the process as stress-free as possible ensuring you get exactly what you want.

We have a wide range of floor plans and décor styles so you can choose the perfect look and layout. We can even create a bespoke design to suit your individual requirements – such as catering for additional needs.

To see our lodges first-hand and find the one that's right for you, book an appointment to visit our Show Centre at Brandon, Suffolk. We're just off the A11 within easy reach of Norwich, Cambridge, Thetford and Newmarket, and around 1.5 hours' drive from London.

Our opening hours are Monday to Friday 9.30am–4.30pm and Saturday 10.00am–4.00pm.

Omar Park Homes Ltd, Head Office & Show Centre, London Road, Brandon, Suffolk IP27 0NE

**01842 810 673 | [www.omar.co.uk](http://www.omar.co.uk) | [sales@omar.co.uk](mailto:sales@omar.co.uk)**



Information correct at time of printing. Printed June 2014.